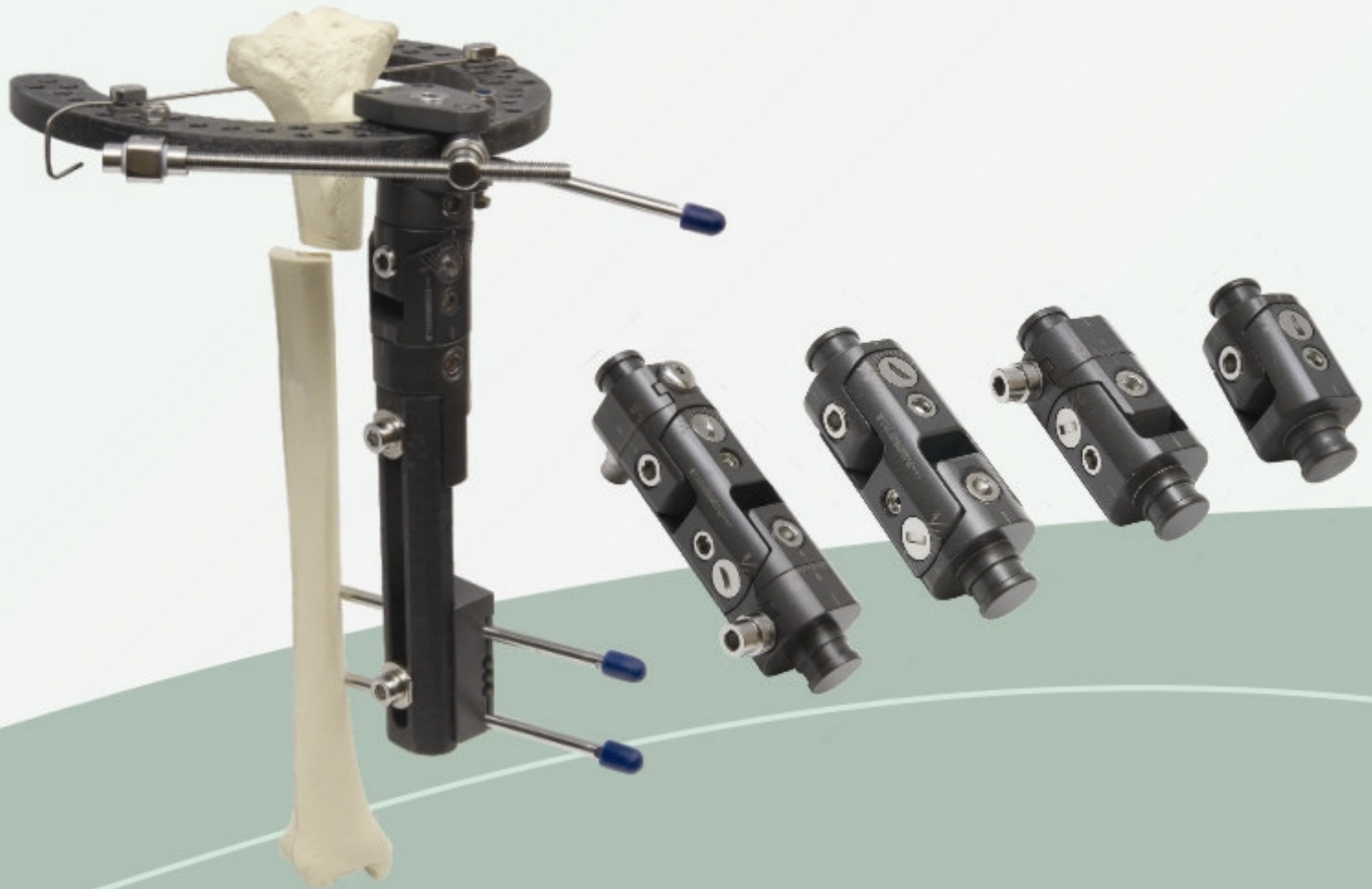




*tasarimmed*<sup>®</sup>



MULTI - AXIS FIXATOR (MAF)

\* The correction mechanism is patented 2007 00941 \*



# *tasarimmed*

## MULTI-AXIS FIXATOR (MAF)



**PATENTED**  
2007 0910



MAF-1000S | MULTI-AXIS FIXATOR (MAF) SINGLE DIMENSION  
CORRECTION DEVICE MODUL



**PATENTED**  
2007 0910



MAF-1000D | MULTI-AXIS FIXATOR (MAF) DOUBLE DIMENSION  
CORRECTION DEVICE MODUL



**PATENTED**  
2007 0910



MAF-1000D2 | MULTI-AXIS FIXATOR (MAF) DOUBLE DIMENSION AND  
DUAL CORRECTION DEVICE MODUL



**PATENTED**  
2007 0910

MAF-1000Q | MULTI-AXIS FIXATOR (MAF) QUATRO DIMENSION  
CORRECTION DEVICE MODUL

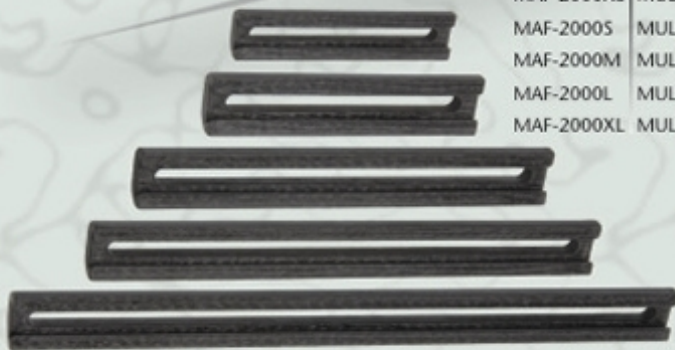
MAF-2000XS | MULTI-AXIS FIXATOR (MAF) CARBON RAIL XSMALL

MAF-2000S | MULTI-AXIS FIXATOR (MAF) CARBON RAIL SMALL

MAF-2000M | MULTI-AXIS FIXATOR (MAF) CARBON RAIL MEDIUM

MAF-2000L | MULTI-AXIS FIXATOR (MAF) CARBON RAIL LARGE

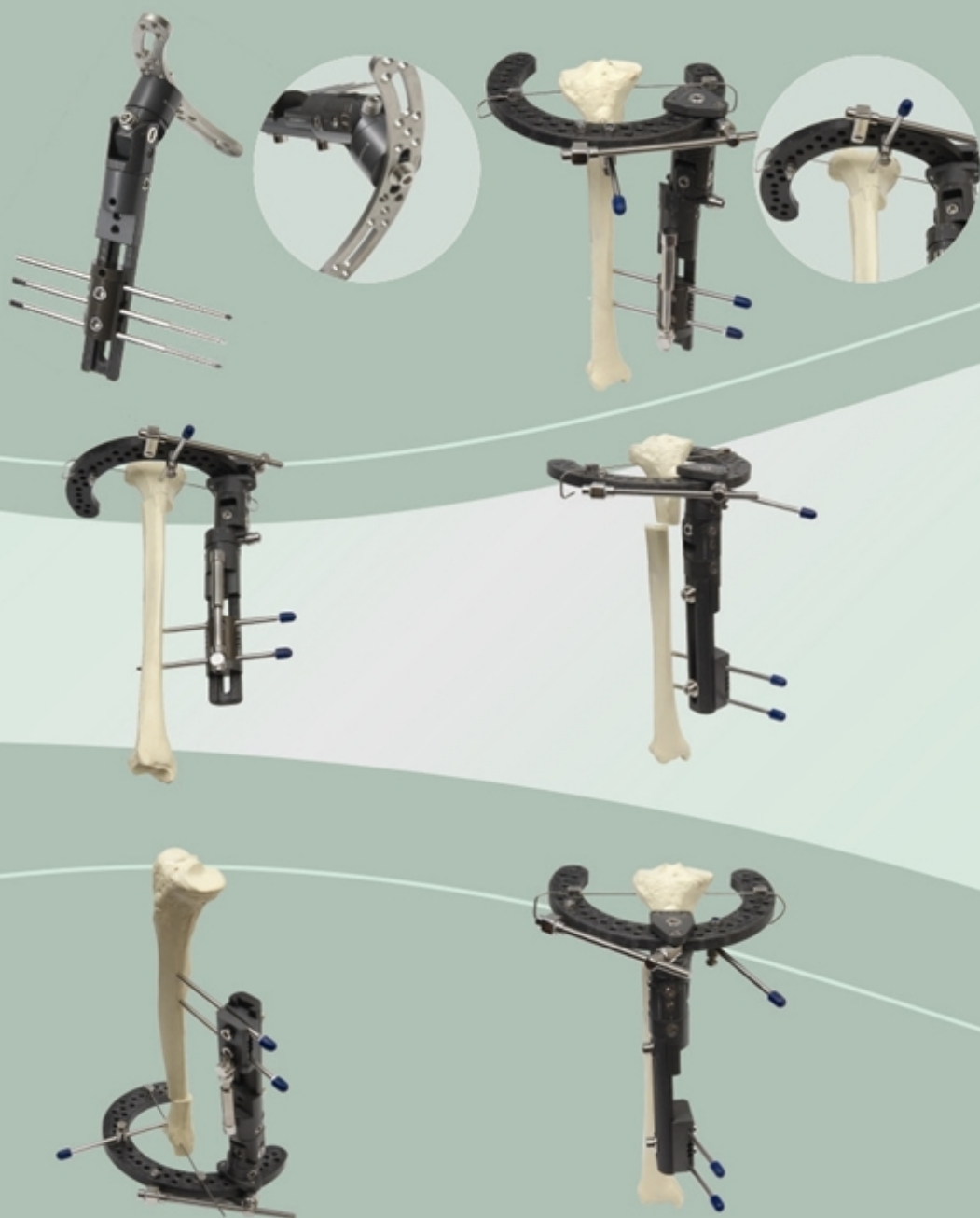
MAF-2000XL | MULTI-AXIS FIXATOR (MAF) CARBON RAIL XLARGE



\* The correction mechanism is patented 2007 00941 \*

## CORRECTION SAMPLES

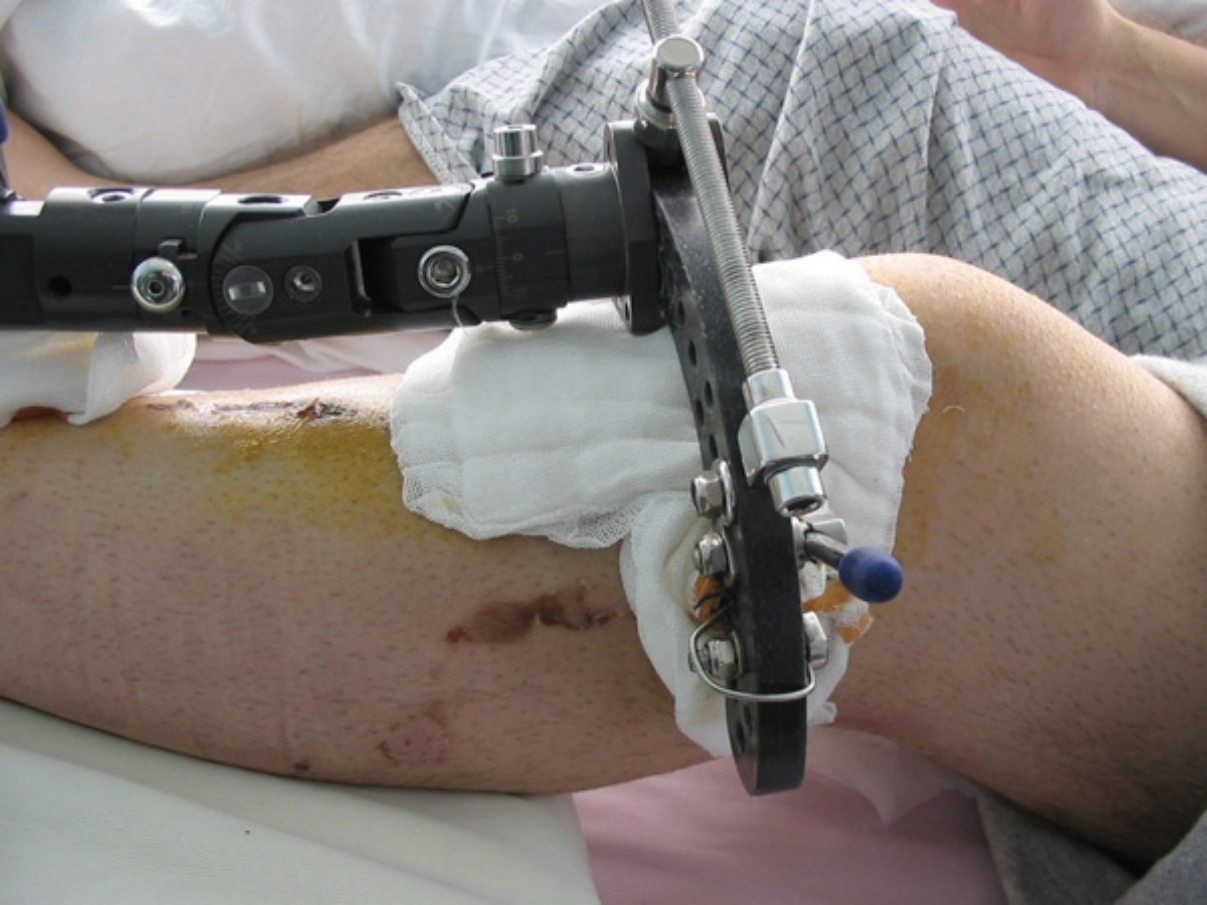
° The correction mechanism is patented 2007 00941 °



**TASARIMMED TIBBİ MAMÜLLER SAN. ve TİC. LTD. ŞTİ.**

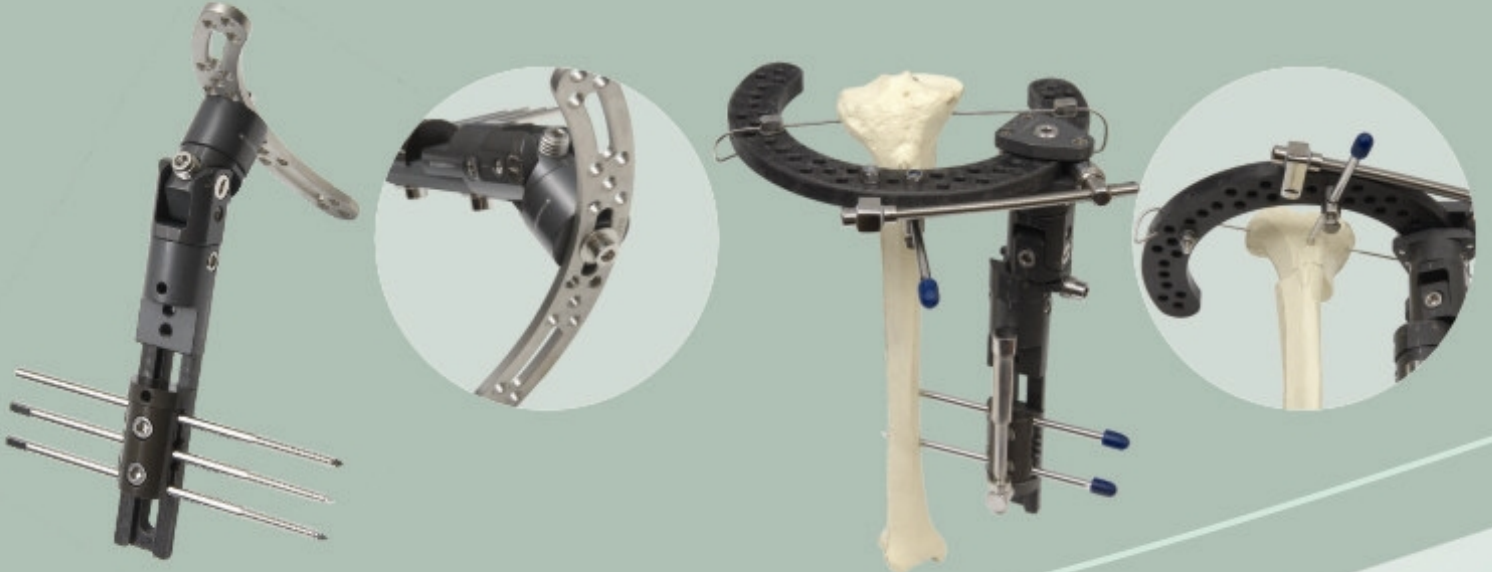
Demirkapı, Topçular Cad. Set Üstü No. 3 (34055) Eyüp - İSTANBUL  
Tel: +90 212 674 22 44 - 45 Fax: +90 212 674 22 46  
web : [www.tasarimmed.com](http://www.tasarimmed.com) e-mail : [info@tasarimmed.com](mailto:info@tasarimmed.com)





## CORRECTION SAMPLES

\* The correction mechanism is patented 2007 00941 \*



**TASARIMMED TIBBİ MAMÜLLER SAN. ve TİC. LTD. ŞTİ.**

Demirkapı, Topçular Cad. Set Üstü No. 3 (34055) Eyüp - İSTANBUL  
Tel: +90 212 674 22 44 - 45 Fax: +90 212 674 22 46  
web : [www.tasarimmed.com](http://www.tasarimmed.com) e-mail : [info@tasarimmed.com](mailto:info@tasarimmed.com)